

## Features

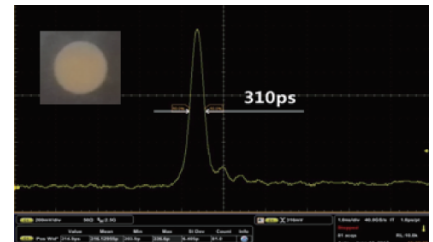
- Highest cost-effective ps laser ever, which makes your cosmetics device more competitive
- 300 picoseconds with 500mJ pulse energy
- Perfect flat-top beam distribution
- Extremely low power and cooling consumption
- Matched solutions: power supply and articulated arm
- CE and RoHS certificates

## 300ps aesthetic OEM-oriented picosecond laser

Peak-Q laser is an aesthetic OEM-oriented picosecond laser, which has been regarded as a short-pulse laser of the latest generation for skin pigmentation removal and tattoo removal.

Peak-Q laser adopts the patented seeding and multi-pass MOPA techniques to generate powerful laser pulses with pulse duration as short as 300ps. More than 2GW/cm<sup>2</sup> high intensity, together with uniform beam distribution, makes Peak-Q an excellent laser source for skin cosmetics due to its better therapeutic effects and lower aching feeling compared with traditional nanosecond Q-switch lasers.

Peak-Q laser offers power supply, articulated arm, handpiece and control system solutions to accelerate customers' system integrated progress. Relevant CE and RoHS certificates indicate Peak-Q is a safe and mature engine for the aesthetic equipment.



## Applications

- Pigment lesion clearance
- Removal of multi-colored tattoos
- Skin care of acne scarring
- Skin rejuvenation via LIOB process



Beamtech Optronics Co.,Ltd.  
Http://www.beamtech-laser.com  
Head Office  
15566 Buena Vista Ave, White Rock, BC V 4B 1Z2, Canada  
phone: 604-960-1429  
Email: beamtech@shaw.ca

Manufacture&Technology Center  
Building B, Hongfu Technology Park,  
Changping Beijing, China 102209  
Tel: 010-84945016/17/18/19  
Fax: 010-84945020



## Specifications

Model		Peak-Q
Repetition Rate		1-10Hz
Single Pulse Energy	1064nm	500 mJ
	532nm	250 mJ
Energy Stability	1064nm	≤3%
	532nm	≤5%
Pulse Width	1064nm	350ps
	532nm	350ps
Divergence		≤1mrad
Beam Diameter		10mm
Beam Profile		Top-hat
Cooling		Air to water
Electrical Service		220V-50/60Hz-10A
Power Consumption		800W
Cooling Consumption		≥800W (10°C temperature difference compared to environment)

## Dimensions

